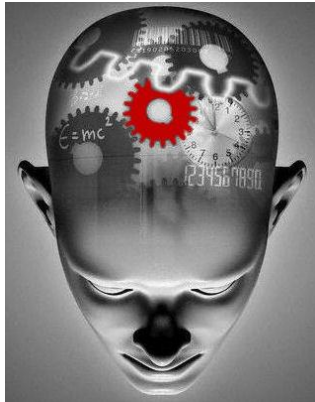




The mission of Concord University is to provide quality, liberal arts based education, to foster scholarly and creative activities and to serve the regional community (<http://www.concord.edu/academics/>).

Part 1:



Psy 2702 (271) Psychology Research II

CRN: 20394

Section: 01

Semester: Spring 2019

Credit Hours: 2.0

Prerequisites: N/A

When: Th from 12:30 – 1:45

Where: Admin 333

Professor: Dr. Rodney Klein

Office: Administration Building - Room 114 or Student Center – Rm 111 (McNair Office)

Office Hours: M & W: 12:00 - 1:30 or by appointment

T & Th: 10:00 - 11:00 or by appointment

Email: kleinr@concord.edu

Phone: (304) 384-5222

Fax: (304) 384-6091

Division of Social Sciences Website Address: <http://www.concord.edu/social-sciences/node/8>

Psychology Program Website Address: <http://www.concord.edu/psychology/>

Additional Faculty: Dr. Griffee: Admin 118 griffeek@concord.edu

Dr. Falco: Admin 115 amfalco@concord.edu

Part 2:

Course Description: The basic principles of scientific experimentation with an introduction to research design, methodology, and professional reporting of research results. The course is designed to mimic a graduate-level psychology research lab, with interaction between the faculty and students on a daily basis and between the students.

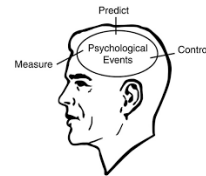
Course Management System: N/A

Text(s): There is no text book for this course, however, students are typically assigned several readings from the research literature. These readings will include research design information and a variety of scientific experiments and theoretical papers published in reputable psychology journals. The specific readings assigned will depend on the specific project on which the student is working. In addition, students will find and share relevant research articles they have found with the class as well.

Optional: American Psychological Association. (2010). Publication Manual of the American Psychological Association (6th edition). Washington, D.C.

Concord University Educational Goal(s):

Skill #3: An ability to employ appropriate methods and technologies for conducting empirical and scholarly research, to interpret research findings, and to use insights gained from such research as a basis for informed decision making.



Learning Outcome(s): Class Participation/Research Project: Relevant interaction and input to course discussions on the various research projects being conducted by self and classmates/completion of appropriate research project (Skill #3)

Course Goals: The primary goal of this course is to provide students with hand-on research experience, essential for admission into many graduate programs. It is also hoped that students will gain a deeper appreciation for psychology as a science of behavior by engaging directly in the process of studying behavior scientifically.

Students will become familiar with the practical concerns and tasks involved in behavioral research, which include the following: developing a testable research question, ensuring ethical treatment of subjects, collecting data accurately and effectively, conducting meaningful data analysis, and useful interpretations and presentation of results.



Course Requirements:

Assignments: Each of the three assignments are worth 10 points.

CITI Program – HRC for Human Research

This assignment consists of reading and passing the quizzes on the on-line ethics program.

Class Attendance and Participation

Attendance and relevant involvement in classroom discussions of student research projects. This will count towards 1/3 of the total course grade (see Goal Skill #3).

Poster Presentation

Research presentation in form of poster at Undergraduate Research Day.

Grading Policy and Scale:

- A = 90% and Above
- B = 80% to 89%
- C = 70% to 79%
- D = 60% to 69%
- F = Below 60%

Make-up Policy and Late Work Policy: It is the responsibility of the student to contact the professor if assignments, papers, or exams are not submitted or completed by the assigned deadline in order to make appropriate arrangements. Any paper that is turned in more than 2 class periods late, without prior communication, will be graded as a zero (so communicate). Additionally, if a paper is handed in and is not typed, it will also be graded as a zero. All work must be completed and submitted by the end of the spring semester.



Course Timeline (Schedule of Assignments/Assessments/Presentations):

Tentative Course Schedule – Psy 215

<u>Week #</u>	<u>Date</u>	<u>Topic/Assignment</u>
1	1/17	Introduction to Experimental Methodology
2	1/24	How and Where to Get Started
3	1/31	Research Ethics
4	2/7	Conducting Library Research
5	2/14	Studying Behavior
6	2/21	Graphing on the Computer
7	2/28	Measurement Concepts
8	3/7	Writing in APA Style

9	3/14	Spring Break

10	3/21	Descriptive Research
11	3/28	Experimental Design
12	4/4	Conducting Experiments
13	4/11	Giving a Professional Presentation
14	4/18	Undergraduate Research Day – Poster Presentation
15	4/25	Application of Research to Field of Psychology and Beyond
16	5/2	Summarize Research Findings for Class

Part 3:

Accessibility/Accommodations:

Concord University is committed to responding to the needs of students with disabilities as defined by the Americans with Disabilities Act. Please inform your instructor at the beginning of the class semester if you have a disability and are requesting accommodations. It is your responsibility to self-disclose that you are requesting accommodations. The University and instructor will provide you with a reasonable accommodation. You should register with CU's Disability Services Office, located in the Athens campus Jerry and Jean Beasley Student Center, Bottom Floor, across from the Campus Post Office. The Disability Services Office phone is 304-384-6086 or you can email the Director, Nancy Ellison, at nellison@concord.edu for assistance.

Academic Dishonesty

Academic dishonesty is morally unacceptable as well as destructive to the learning and teaching atmosphere. Academic dishonesty includes the giving or receiving of improper help on examinations or assignments, falsifying documents, and plagiarism (the act of stealing and using, as one's own, the ideas or the expression of the ideas of another). Such dishonesty can lead to a variety of penalties — including but not limited to failure of assignment, failure of course, loss of institutional privileges, or dismissal from the University. (See University Catalog Academic Policies and Procedures.)

Concord University Honor Code

A Concord University Honor Code was approved by students, staff, faculty, administration, and the CU Board of Governors. The Code states:

"As a member of the Concord University Community I will act with honesty and integrity in accordance with our fundamental principles and I will respect myself and others while challenging them to do the same."

The Honor Code is intended to unite the Concord community behind a culture of honesty, integrity, and civility.

Class/Online Attendance Policy

Regular class attendance is part of a student's academic obligation at Concord. Irregular attendance may affect academic performance adversely and is detrimental to the atmosphere of a class. (See University Catalog Academic Policies and Procedures.)

Emergency Alert System

In an effort to increase safety and security on our campus, Concord University encourages everyone to register for instant text message alerts. Alerts will only be used for security and safety notices. All students, faculty, and staff are eligible to receive text message alerts on their cell phones or email alerts. Please contact the IT Help Desk for further assistance (304-384-5291).

Emergency Information

Emergency/courtesy telephones are located at the main entrance of each residence hall and at various other locations on campus. Emergency telephones can be identified by the flashing blue light and will provide the user with a direct link to Public Safety at the press of a button. To report an on-campus

emergency, call 304-384-5357 or 911. The Office of Public Safety is located on the bottom floor of the Rahall Technology Center. For further emergency information go to: <http://www.concord.edu/administration/office-public-safety>.

Inclement Weather Policy

As a general policy, the University will remain in normal operations during adverse weather conditions. In the event of severe weather conditions, the following may occur:

University Closure

No students or employees are to report.

Classes Cancelled

Students do NOT report BUT employees are expected to report to work at their normal time.

Operating on an Inclement Weather Delay

Under this schedule, all 8 a.m. classes will start at 10 a.m. Students and faculty will follow the Inclement Weather Schedule. (See <http://www.concord.edu/emergency-alerts> for Athens/Beckley Inclement Weather Schedules.)

**Announcements invoking the late schedule or other options referenced above are aired on area radio and television stations and are sent as text and email messages to those enrolled for this service.*

Inclement Weather schedule:

MWF Classes Regular	MWF Classes Inclement	TR Classes Regular	TR Classes Inclement
8:00-8:50	10:00-10:40	8:00-9:15	10:00-11:00
9:00-9:50	10:45-11:25	9:30-10:45	11:05-12:05
10:00-10:50	11:30-12:10	11:00-12:15	12:10-1:10
11:00-11:50	12:15-12:55	12:30-1:45	1:15-2:15
12:00-12:50	1:00-1:40	2:00-3:15	2:20-3:20
1:00-1:50	1:45-2:25	3:30-4:45	3:25-4:25
2:00-2:50	2:30-3:10		
3:00-3:50	3:15-3:55		

Student Conduct

In classrooms, online, laboratories, and during any activities that are part of course requirements, students are expected to observe reasonable rules of conduct.

Sexual Harassment & Assault

Federal law, Title IX, and Concord University policy prohibits discrimination, harassment, and violence based on sex and gender (Including sexual harassment, sexual assault, domestic/dating violence, stalking, sexual exploitation, and retaliation). If you or someone you know has been harassed or assaulted, you can receive confidential counseling support through the Concord University Counseling Center (304-384-5290). Alleged Violations can be reported non-confidentially to the Concord University Title IX Coordinator at 304-384-6327 or titleix@concord.edu. Reports to Campus Security can be made at (304-384-5357). As an employee at Concord University, I am a mandatory reporter which means I must report any sexual misconduct I am made aware of. This includes verbal or written (such as in an assignment) disclosures of sexual harassment or sexual assault.

Technology Services

Contact the CU Help Desk at extension 5291 from campus or 304-384-5291 off campus. You may also e-mail cuhelpdesk@concord.edu.

Sources of Help:

Drop-In Tutoring: free tutoring is available in the Library, Student Center Study Lounge (2nd floor), and Rahall atrium. For specific information, contact the Academic Success Center (asc@concord.edu or 304 384-6074)

SMARTHINKING: free online tutoring in most subjects is available 24/7. You may sign up through the MyCU Student Tab.

Syllabus Disclaimer

"This syllabus is subject to change based on the needs of the class. Please check it regularly."