



The mission of Concord University is to provide quality, liberal arts based education, to foster scholarly and creative activities and to serve the regional community (<http://www.concord.edu/academics/>).

Part 1:



Psy 414 - Advanced Experimental Psychology

CRN: 20411

Section: 1HW

Semester: Spring 2019

Credit Hours: 3.0

Prerequisites: Psy 212, Psy 215

When: M & W from 11:00 – 11:50 and F online

Where: Admin 301

Professor: Dr. Rodney Klein

Office: Administration Building - Room 114 or Student Center – Rm 111 (McNair Office)

Office Hours: M & W: 12:00 - 1:30 or by appointment
T & Th: 10:00 - 11:00 or by appointment

Email: kleinr@concord.edu

Phone: (304) 384-5222 or (304) 384-6020

Fax: (304) 384-6091

Division of Social Sciences Website Address: <http://www.concord.edu/social-sciences/node/8>

Psychology Program Website Address: <http://www.concord.edu/psychology/>

Part 2:

Course Description: This course will provide an in-depth and active involvement in all aspects of the experimental process as it applies to psychological research. Included in this process are such topics as conducting a literature review, writing a research proposal, ethics, designing and conducting research, analyzing the data on the computer, and presenting research results in a professional manner. The basic principles of scientific experimentation with an introduction to research design, methodology, and professional reporting of research results.

Course Management System: this course will use Blackboard

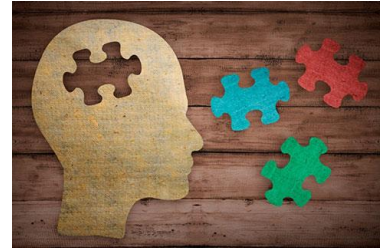
Text(s): Required: None, but numerous handouts, such as journal articles, book chapters, and other readable will be made available.

Optional: American Psychological Association. (2010). Publication Manual of the American Psychological Association (6th edition). Washington, D.C.

Concord University Educational Goal(s):

Skill #1: Effective inter-communication skills and literacy adapted as needed for the demands of various kinds of discourse:

- listening and speaking
- reading and writing
- numeracy
- graphic communication
- non-verbal communication
- media and technological literacy



Skill #3: An ability to employ appropriate methods and technologies for conducting empirical and scholarly research, to interpret research findings, and to use insights gained from such research as a basis for informed decision making.

Attitude #1: Habitual reflection on ethical/moral implications of actions when weighing decisions and evaluating outcomes

Learning Outcome(s):

- **Research Ethics (Objective Attitude #1) Successful Completion of CITI Program RCR for Human Research (≥ 80% on each module)**
- **Research Interpretation (Objective Skill #3) Successful completion of written article interpretation with a grade of C or better**
- **Oral Presentation (Objective Skill #1) Successful Completion of Research Project Presentation with Grade of C or better**

Course Goals:

The goal of this course is to build on the foundation established in Psych 215, Experimental Psychology. The organization of this course is based on the assumption that the ability to conduct sound experimental research improves with experience. This course is an attempt to give you more experience.

In terms of the course work, we will further focus on the problems and procedures of carrying out experimental research. We will continue to emphasize the rationale for doing experimental research, the basic types of experimental research designs used in science, the process of designing a sound experimental study, and the appropriate style of writing (APA) and presenting scientific results. We will also spend a considerable amount of time re-establishing our understanding of statistical methods and tests.

Course Requirements:

Assignments: Each of the two assignments are worth 15 points

Assignment 1: CITI Program - Research Ethics

This assignment consists of reading and passing the quizzes on the on-line ethics program and submitting certificate online.

Assignment 2: Research Interpretations

This assignment is comprised of reading an assigned research article and writing an appropriate interpretation in APA format. That is, interpreting the results from the perspective of the researcher (**see Goal Skill #3**).

In-Class Research Project/Paper: The in-class project will result in a paper to be completed in APA format. The paper will be worth 40 points.

Exams: There are two take-home exams and each is worth approximately 75 points. Both exams are primarily comprised of open-ended questions requiring consideration of the material covered in the class and in the handouts. The Mid-Term Exam will also include reading multiple research scenarios and discussing any relevant ethical factors and determining whether any ethical violations have been committed by the researchers and explaining (**see Goal Attitude #1**). The Final Exam will also include at least one “off the wall” question to be addressed and the entire exam will resemble an APA paper when completed.

Final Project: Each student will complete a research project of their own. This includes selecting the topic, designing the study, collecting the data, analyzing the data, and presenting the project in multiple formats. The completion of this project will be comprised of various components (intermediate tasks):

Introduction/Literature Review: The introduction/literature review will be written in APA format and is worth 20 points.

Hypothesis: The submitted version of the research hypothesis is worth 10 points.

Method Section: The Method Section will be written in APA format and is worth 20 points.

After Project Completed:

Research Poster (presented at the CU Undergraduate Research Day): The poster presentation is worth 30 points and will be completed using an MS Powerpoint template and according to APA specifications.

Paper (Oral) Presentation: The oral presentation (**see Objective Skill #1**) may be completed at the Undergraduate Research Day or in class and is worth 30 points.

Paper: The actual final paper will be written in APA format and is worth 60 points.



Grading Policy and Scale:

- A = 90% and Above
- B = 80% to 89%
- C = 70% to 79%
- D = 60% to 69%
- F = Below 60%

Make-up Policy and Late Work Policy: It is the responsibility of the student to contact the professor if assignments, papers, or exams are not submitted or completed by the assigned deadline in order to make appropriate arrangements. Any paper that is turned in more than 2 class periods late, without prior communication, will be graded as a zero (so communicate). Additionally, if a paper is handed in and is not typed, it will also be graded as a zero. All work must be completed and submitted by the end of the spring semester.

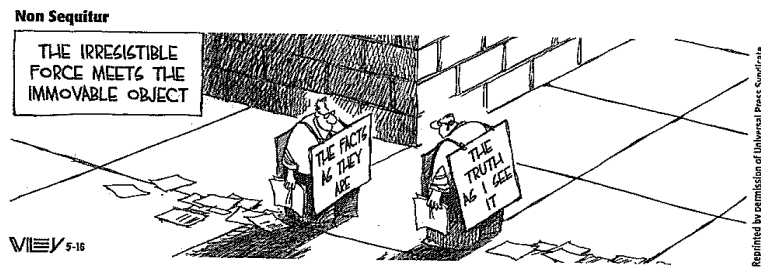
Tentative Course Timeline (Schedule of Assignments/Assessments/Presentations):

<u>Week #</u>	<u>Dates</u>			<u>Topic/Assignment</u>
1	1/14	1/16	1/18	Introduction to Experimental Methodology <i>Reading:</i> Science and Behavior: An Introduction to Methods of Psychological Research
2	--	1/23	1/25	Review of Experimental Assumptions Descriptive Research Conduct: Class Project
3	1/28	1/30	2/1	Library Research and Writing a Literature Review <i>Readings:</i> (1) Preparing Literature Reviews: Qualitative and Quantitative Approaches (2) How to think Straight About Psychology Class Project Paper Due
4	2/4	2/6	2/8	Research Ethics <i>Reading:</i> Ethics of Experimental Research
5	2/11	2/13	2/15	Writing in APA Style & Short Talks <i>Reading:</i> Trouble at the Lab
6	2/18	2/20	2/22	Understanding Research Results <i>Readings:</i> (1) The Structure of Scientific Revolutions (2) The Demon-Haunted World
7	2/25	2/27	2/29	Critically Examining Research & Short Talks Research Proposals: Absolute Deadline
8	3/4	3/6	3/8	Experimental Designs & <i>Reading:</i> The Law of Small Numbers Mid-Term Exam Due

9	3/11	3/13	3/15	Spring Break

10	3/18	3/20	3/22	Conducting Research
11	3/25	3/27	3/29	Conducting Experiments Assignment 1 Due
12	4/1	4/3	4/5	Collecting Data
13	4/8	4/10	4/12	Inferential Statistics Quasi-Experimental Research Designs

14	4/15	4/17	4/19	Analyzing Data, Poster Presentation & Graphing on the Computer
		4/18		Undergraduate Research Day – Poster Presentation
15	4/22	4/24	4/26	Understanding Research Results
				Giving a Research Presentation
				Assignment 2 Due
16	4/29	5/1	5/3	Oral Presentations and Final Research Papers Due
17	5/6			Oral Presentations continue
				Final Exam Due: Monday, 11:30 – 1:45.



Part 3:

Accessibility/Accommodations:

Concord University is committed to responding to the needs of students with disabilities as defined by the Americans with Disabilities Act. Please inform your instructor at the beginning of the class semester if you have a disability and are requesting accommodations. It is your responsibility to self-disclose that you are requesting accommodations. The University and instructor will provide you with a reasonable accommodation. You should register with CU's Disability Services Office, located in the Athens campus Jerry and Jean Beasley Student Center, Bottom Floor, across from the Campus Post Office. The Disability Services Office phone is 304-384-6086 or you can email the Director, Nancy Ellison, at nellison@concord.edu for assistance.

Academic Dishonesty

Academic dishonesty is morally unacceptable as well as destructive to the learning and teaching atmosphere. Academic dishonesty includes the giving or receiving of improper help on examinations or assignments, falsifying documents, and plagiarism (the act of stealing and using, as one's own, the ideas or the expression of the ideas of another). Such dishonesty can lead to a variety of penalties — including but not limited to failure of assignment, failure of course, loss of institutional privileges, or dismissal from the University. (See University Catalog Academic Policies and Procedures.)

Concord University Honor Code

A Concord University Honor Code was approved by students, staff, faculty, administration, and the CU Board of Governors. The Code states:

"As a member of the Concord University Community I will act with honesty and integrity in accordance with our fundamental principles and I will respect myself and others while challenging them to do the same."

The Honor Code is intended to unite the Concord community behind a culture of honesty, integrity, and civility.

Class/Online Attendance Policy

Regular class attendance is part of a student's academic obligation at Concord. Irregular attendance may affect academic performance adversely and is detrimental to the atmosphere of a class. (See University Catalog Academic Policies and Procedures.)

Emergency Alert System

In an effort to increase safety and security on our campus, Concord University encourages everyone to register for instant text message alerts. Alerts will only be used for security and safety notices. All students, faculty, and staff are eligible to receive text message alerts on their cell phones or email alerts. Please contact the IT Help Desk for further assistance (304-384-5291).

Emergency Information

Emergency/courtesy telephones are located at the main entrance of each residence hall and at various other locations on campus. Emergency telephones can be identified by the flashing blue light and will provide the user with a direct link to Public Safety at the press of a button. To report an on-campus emergency, call 304-384-5357 or 911. The Office of Public Safety is located on the bottom floor of the Rahall Technology Center. For further emergency information go to:

<http://www.concord.edu/administration/office-public-safety>.

Inclement Weather Policy

As a general policy, the University will remain in normal operations during adverse weather conditions. In the event of severe weather conditions, the following may occur:

University Closure

No students or employees are to report.

Classes Cancelled

Students do NOT report BUT employees are expected to report to work at their normal time.

Operating on an Inclement Weather Delay

Under this schedule, all 8 a.m. classes will start at 10 a.m. Students and faculty will follow the Inclement Weather Schedule. (See <http://www.concord.edu/emergency-alerts> for Athens/Beckley Inclement Weather Schedules.)

**Announcements invoking the late schedule or other options referenced above are aired on area radio and television stations and are sent as text and email messages to those enrolled for this service.*

Inclement weather Schedule:

MWF Classes Regular	MWF Classes Inclement	TR Classes Regular	TR Classes Inclement
8:00–8:50	10:00–10:40	8:00–9:15	10:00–11:00
9:00–9:50	10:45–11:25	9:30–10:45	11:05–12:05
10:00–10:50	11:30–12:10	11:00–12:15	12:10–1:10
11:00–11:50	12:15–12:55	12:30–1:45	1:15–2:15
12:00–12:50	1:00–1:40	2:00–3:15	2:20–3:20
1:00–1:50	1:45–2:25	3:30–4:45	3:25–4:25
2:00–2:50	2:30–3:10		
3:00–3:50	3:15–3:55		

Student Conduct

In classrooms, online, laboratories, and during any activities that are part of course requirements, students are expected to observe reasonable rules of conduct.

Sexual Harassment & Assault

Federal law, Title IX, and Concord University policy prohibits discrimination, harassment, and violence based on sex and gender (including sexual harassment, sexual assault, domestic/dating violence, stalking, sexual exploitation, and retaliation). If you or someone you know has been harassed or assaulted, you can receive confidential counseling support through the Concord University Counseling Center (304-384-5290). Alleged Violations can be reported non-confidentially to the Concord University Title IX Coordinator at 304-384-6327 or titleix@concord.edu. Reports to Campus Security can be made at (304-384-5357). As an employee at Concord University, I am a mandatory reporter which means I must report any sexual misconduct I am made aware of. This includes verbal or written (such as in an assignment) disclosures of sexual harassment or sexual assault.

Technology Services

Contact the CU Help Desk at extension 5291 from campus or 304-384-5291 off campus. You may also e-mail cuhelpdesk@concord.edu.

Sources of Help:

Drop-In Tutoring: free tutoring is available in the Library, Student Center Study Lounge (2nd floor), and Rahall atrium. For specific information, contact the Academic Success Center (asc@concord.edu or 304 384-6074)

SMARTHINKING: free online tutoring in most subjects is available 24/7. You may sign up through the MyCU Student Tab.

Syllabus Disclaimer

"This syllabus is subject to change based on the needs of the class. Please check it regularly."